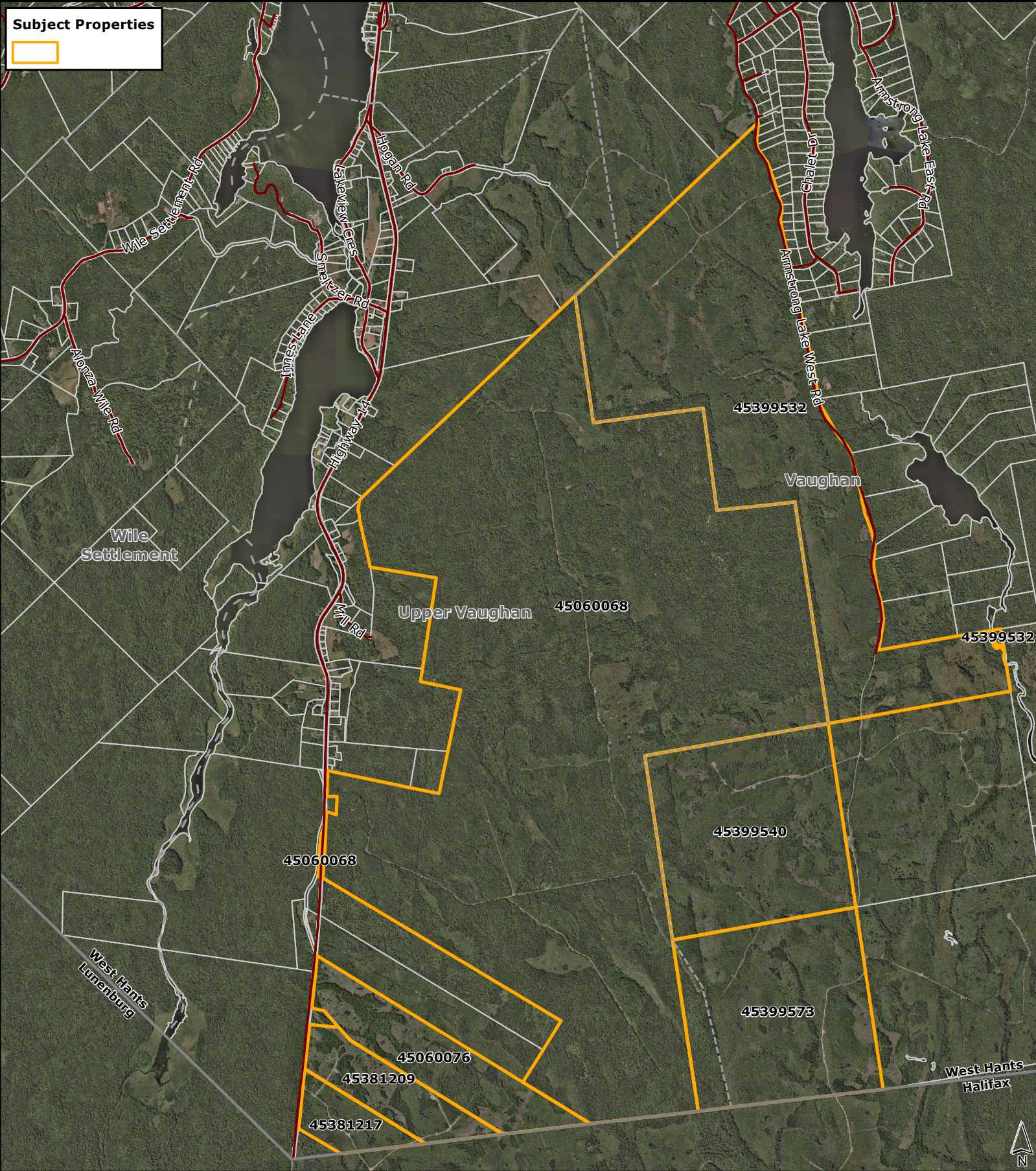


Subject Properties

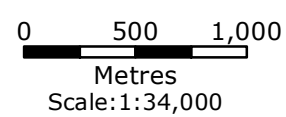


Base data derived from the Nova Scotia Property Records Database (NSPRD) and the Nova Scotia, Geomatics Centre (NSGC), Copyright Her Majesty The Queen in Right of the Province of Nova Scotia.

This map is a graphical representation only. It is not a land survey and is not intended for used for legal descriptions or to calculate exact dimensions or area.

Prepared by: West Hants Regional Planning and Development Department May, 2025.

Orthophoto Proposed Bear Lake Wind Farm



- Municipal Boundary
- Communities
- Parcels
- Roads