



## Recycling Stream #1:

### Containers



- Plastic containers (laundry detergent, cleaner jugs, shampoo/body wash, toothpaste, deodorant, hand cream tubes, food trays, plastic cups, tubs and lids, plant pots, candy/gum containers)
- Plastic film (stretchy plastic like bags, shrink wrap and freezer bags)
- Cartons (dairy & dairy substitute cartons, molasses, laundry & cleaning, soup & sauce and coffee cartons)
- Paper laminate packaging (spiral cans, cookie dough package, ice cream containers, hot & cold beverage cups)
- Tin/Aluminum/Steel foil & plates
- Tins (candles, cookies, coffee, tea)
- Coat hangers
- Glass bottles & jars
- Metal drink & food cans

#### Important Collection Details:

- Items must be clean & dry
- Place into clear or clear blue bags
- NO books, garbage, organics or hazardous materials are permitted in this recycling stream



## Recycling Stream #2:

### Paper



- Cardboard boxes (pizza boxes, moving boxes, shoe boxes)
- Boxboard (cereal & tissue boxes, egg cartons, toilet paper and paper towel rolls)
- Paper
  - Flour bags, prescription bags, paper produce bags
  - Sugar and potato bags
  - Notepads, loose paper, file folders, other printed materials
  - Community newspapers, flyers, brochures and magazines
  - Greeting cards and envelopes, gift boxes
  - Wrapping & tissue paper
- Paper laminate packaging
  - Plates, pet food bags, paper and gift bags, muffin/sandwich bags, empty paper takeout packaging and popcorn bags
- Paper sleeves from hot drinks
- Shredded paper

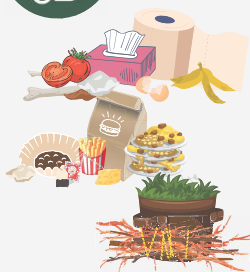
#### Important Collection Details:

- Place materials into clear or clear blue bags
- NO plastic, metal, glass, or disposable cups
- Cardboard boxes must be flattened & securely tied into bundles 60cm x 60cm (2ft x 2ft)



## Green Cart:

### Organics



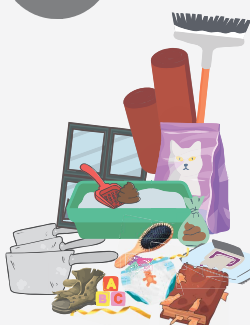
- ALL food waste
- Cooking oil & fat
- Tea bags, coffee filters
- Paper towel, napkins & tissues
- Wet paper and cardboard
- Yard waste (leaves, brush, sawdust & small branches)

#### Important Collection Details:

- NO biodegradable or compostable plastics of any kind, INCLUDING bio-plastic compost liners and coffee pods
- NO milk cartons, disposable coffee cups, ashes, rocks, or large quantities of dirt
- See "Curbside Guidelines" (page 6) for proper disposal of brush and other yard waste



### Garbage



- Pet waste (feces, litter, waste bags)
- Diapers, wet wipes & sanitary products
- Broken glass (safely boxed, sealed, labelled & placed next to clear bag)
- Hairbrush, broom
- Damaged books, pens, binders
- Clothing & textiles
- Dirty plastic cutlery
- Floor sweepings
- Ashes (cold)
- Rolled carpet & furniture
- Pots and pans

#### Important Collection Details:

- Place waste into clear bags - black bags are restricted in WHRM
- Items made of 70% METAL or more can be collected during the special collection event in June - see schedule and curbside guidelines



#### Materials NOT Collected Curbside



- Paint and paint cans: Visit [regeneration.ca](http://regeneration.ca) for drop off sites near you
- Batteries: Visit [recycleyourbatteries.ca](http://recycleyourbatteries.ca) for drop off sites near you
- Medications & Syringes (sharps): Contact your local pharmacy for free Safe Sharps containers & drug return programs
- Electronics: Take to the local Electronics Recycling Center, 79 Centennial Drive, Windsor or visit <https://recyclemyelectronics.ca/ns/where-can-i-recycle>
- Motor oil, antifreeze, oil filters, oil & antifreeze containers: Visit [www.ns.uoma-atlantic.com/en/collection-facilities](http://www.ns.uoma-atlantic.com/en/collection-facilities) for drop off sites near you
- Fridges, freezers, water coolers & air conditioners: These contain CFCs (freon) that must be properly removed by a professional. Bring to the HHW Depot at the West Hants landfill for free and proper disposal
- Household Hazardous Waste (HHW): Bring items with the above hazard symbols to the HHW Depot at the West Hants Landfill

### ✓ Depot Drop-Off Items

- Foam packaging - Meat trays, takeout containers, cups, plates, bowls, foam packaging
- Aerosol containers - food spray, air fresheners, shaving cream, deodorant
- Flexible plastics - coffee or deli pouches, chip bags, bubble wrap, vacuum packaging, candy & snack wrappers, cereal liner bags, gift bags

